



Microfabrication Ltd

2022

v1.0



# COMPANY BROCHURE

A WORLD CLASS  
CONTRACT MANUFACTURER

# ABOUT US

---

ESTABLISHED IN 2014, AS A CASTING MANUFACTURER in the central region of Shandong Province, MicroFabrication and Qingdao Metalworking Ltd. has evolved over the years into a world-class, build-to-print contract manufacturer of metal and plastic parts.

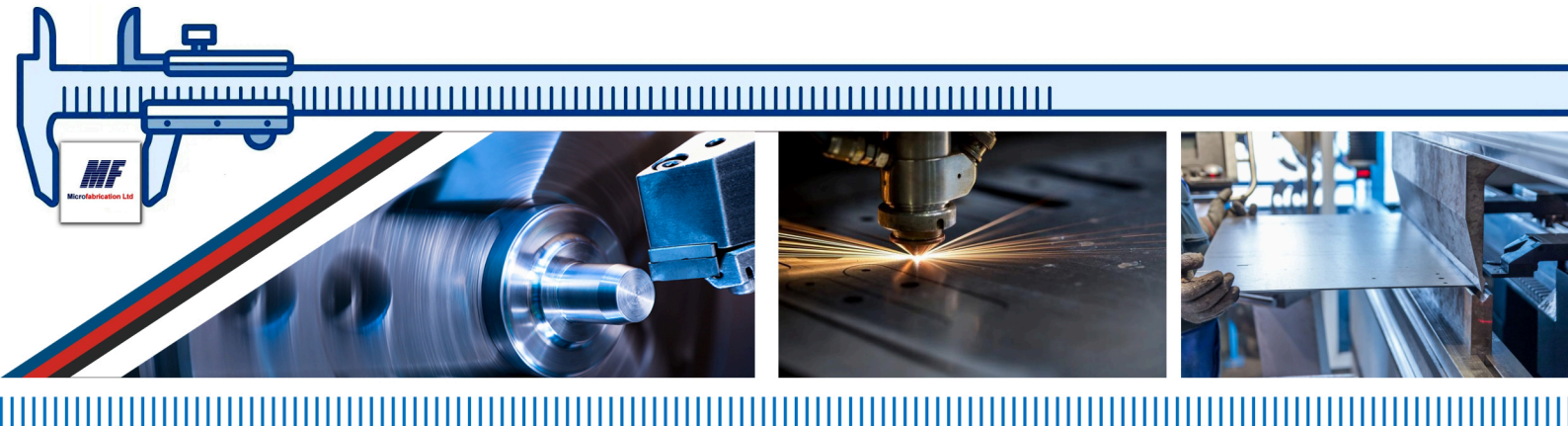
We specialize in the production of short run and high volume metal stampings, forgings, castings, fasteners, machining, extrusions, and plastic injection molding parts.

We supplies parts to some of the world's largest and most respected OEM manufacturers, including TMH International, Caterpillar, MINSK Tractor Works, America Rail, MAGNA, and more. We also have extensive experience working with medium-sized corporations, small businesses, and even start-ups.

Our management team has over 30 years of experience in the manufacturing industry and we are proud to serve as our customers' end-to-end manufacturing partner. Our success is measured by our customers' ability to realize cost savings. Allow us to show you how we can dramatically reduce your costs and improve your bottom line. We welcome all inquiries and look forward to serving you.







Capabilities

Services

Management

Advantages

Product Showcase

## Our Capabilities

We have found success by focusing on the 4 pillars of operations management: quality, costs, service, and leadtimes. However, what sets us apart from other companies in our industry is our strategic investments: we own our factories, have invested inequipment, formed joint ventures, and negotiated numerous exclusive contracts that allow us to take effective ownership of your global manufacturing projects. These strategic investments, along with our expertise and experience, provide our customers with all of the benefits of outsourcing.

### We Specialize In

- Custom Metal Fabrications
- Precision Machined Parts
- Aluminum/Steel Castings
- Hot Forgings
- Extrusions
- Plastic Injection
- Assembly





Capabilities

Services

Management

Advantages

Product Showcase

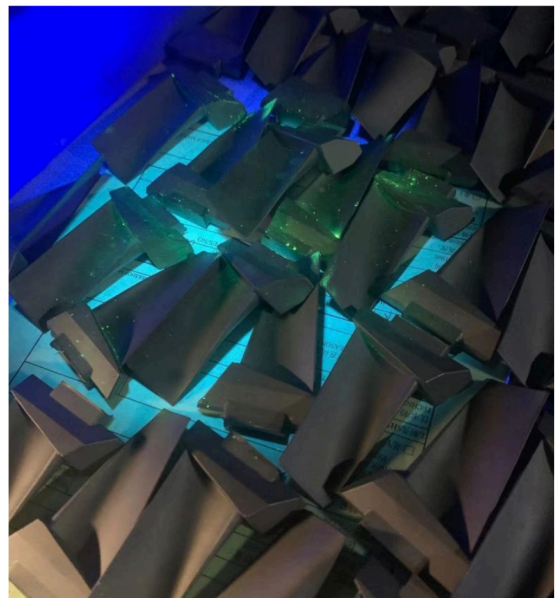
## Our Steel Fabrication and Machining Capabilities

Carbon and alloy steel  
Flame, Plasma and Laser  
Bending, Shearing, Punching  
Manual/Robotic Welding  
Milling, Drilling, Turning etc.  
Heat Treating  
E-Coat, Spray, Anodizing etc.



## Our Inspection and Testing Capabilities

Mechanical, Chemistry and Metallurgical Testing and Analysis  
CMM  
Magnetic Particle Inspection  
Penetrant Testing(PT)  
Ultrasonic Testing(UT)  
Hardness Testing  
Coating Inspection







Capabilities  
Services  
Management  
Advantages  
Product Showcase

## Our Services



### Product Design and Development

We will work closely with your product design and development teams to ensure we have a complete understanding of your products application and specifications and leverage our knowledges in MF to offer "design for manufacturability" ideas applicable to your products.



### Manufacturing Engineering

Leveraging our Manufacturing Engineering expertise we will ensure that the manufacturing methods used for your products will consistently deliver the quality you expect at the lowest cost.



### Supply Chain Strategies

As a result of economic globalization and the integration of world economies, the need to think strategically about your supply chain have never been more important. We will work with your team to develop lean, reliable and sustainable strategies tailored to your specific business objectives.



### Quality Planning

We draw upon an extensive array of quality planning tools to create product and process quality plans that will ensure reliable and repeatable product quality.





Capabilities  
Services  
Management  
Advantages  
Product Showcase

## Our Management

After long-term practice and summary, we have gained mature and rich management experience. Compared with traditional manufacturing plants, we are more responsive to customer needs and more flexible; compared with traditional trading companies, we have stronger control over quality, delivery and cost. This rich management experience is unique and is the core competitiveness of MicroFabrication.

### Quality Management

- Quality Commitment
- Quality Assurance
- On-site Audit
- Inspection
- Quality Compliance
- ...





Capabilities  
Services  
Management  
Advantages  
Product Showcase

### Control Plan

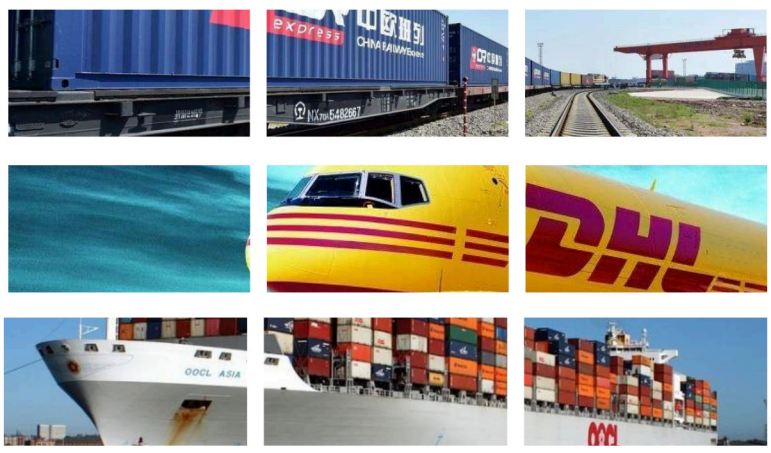
Pre-launch	Production	Key Contact@Phone	Date (Cng.)							
Sup plan		George@86 1856390135	28/10/27							
Rev		Customer Engineering ApprovalDate (if Req'd)								
		Customer Quality ApprovalDate (if Req'd)								
Supplier Code	Other ApprovalDate (if Req'd)	Other ApprovalDate (if Req'd)								
Name sion tion	Characteristics		Methods							
	No.	Inspection items	Product quality requirement	Evaluation Measurement Technique	Quality control					
					Operator		Auditor			
				Size	Freq.	Method	Size			
sum es sion	1.1	Dimensions	Flat profile: width 60±0.3mm, 38±0.3mm Thickness 2.8+0.15/-0mm Old design square profile: 35*15mm Thickness 2mm New design square profile: 35*18.8mm Thickness 1.2+0.1/-0mm	Caliper	10%	Each batch	Spot-check	10%	Each batch	incom. Inspec. Procedure.
	1.2	Apperance	Surface should be smooth and even, no deformation, no burrs and cracks, color should be unified. Do not allow extrusion line.	By the eye	10%	Each batch	Spot-check	10%	Each batch	in
	1.3	Raw material	6063-T5		10%	Each batch	Spot-check	10%	F	
sum es ge	2.1		Prevent raw material deformation due to heavy load	Storing off the ground, storing area should be dry. And if storing period more than 6 months, the storage should be rechecked dimensions before using.	One time	Day		One time		
ig, ing	3.1	Dimensions	General tolerances for lengths: Up to 600mm = ±0.2mm 600 - 800mm = ±0.4mm 800 - 1200mm = ±0.5mm	Caliper	100%	Each batch	Spot-check	10%		
	3.2	Cutting angle	90°±0.2-0.3°	Angle ruler	100%	Each batch	Spot-check	10%		
ing	4.1	Dimensions	Hole positions should be comply with drawings(SO2788-1-M)	Caliper		Each	First article inspection	One time		

## Planning

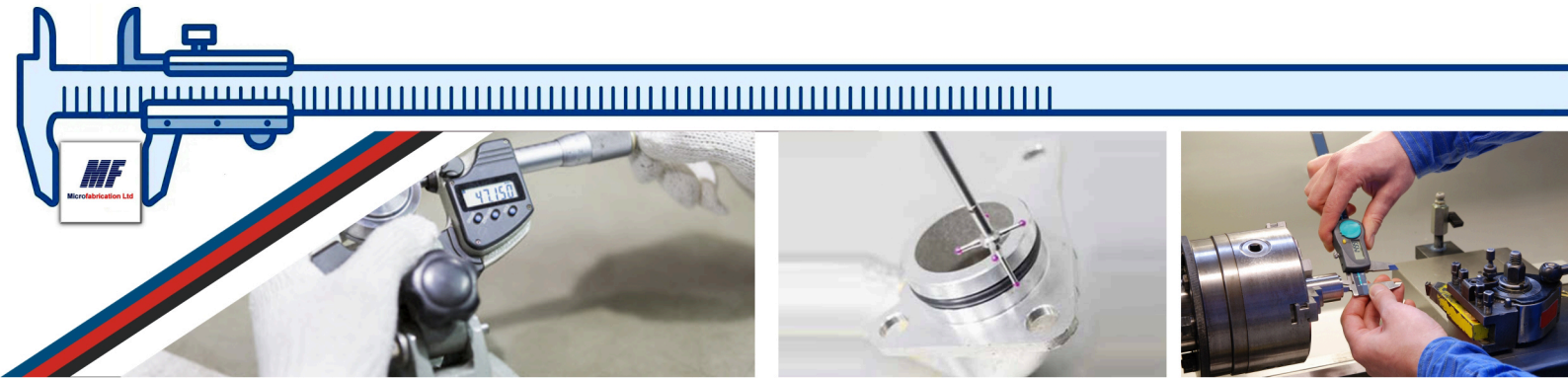
From the incoming of raw materials to the the delivery of products, all processes will be implemented in accordance with the quality control plan.

## Delivery Management

- Timing plan
- Production beat control
- Scheduler follow up and coordinate
- Tailor-made shipping solutions
- Safe stock







Capabilities  
Services  
Management  
Advantages  
Product Showcase

Microfabrication Ltd				Timing Plan							Update Date: 19-May-21	Delivery: Custom						
				Plan Progress:								Order N						
				Actual Progress:								Part Na						
				Holiday:								Tool Nur						
				Public Holiday:								Project I						
				Mon. Date	20	21	22	23	24	25	26	27	28	29	30	31	1	2
				Week	12					13								
				Process Step														
				Start Date														
				Finish Date														
				Complete %														
				1. Raw material preparation	20-Mar-21	31-Mar-21	100%	Plan										
				2. Tooling & Casting machine preparation	1-Apr-21	3-Apr-21	100%	Actual										
				3. Casting	3-Apr-21	15-Apr-21	100%	Actual										
				4. Castings inspection (Dimension+appearance+X-Ray)	4-Apr-21	17-Apr-21	100%	Actual										
				5. Heat treatment	10-Apr-21	20-Apr-21	100%	Actual										
				6. Machining+Inspection	15-Apr-21	5-Jun-21	60%	Plan										
				7. Polishing+CMM contour check	20-Apr-21	20-Jun-21	10%	Actual										
				8. Packing+Transportation	21-Apr-21	25-Jun-21	2%	Actual										
				9. Delivery at least 108 sets	30-Apr-21	7-May-21	0%	Actual										
				10. Delivery the rest quantity	20-May-21	5-Jun-21	0%	Actual										

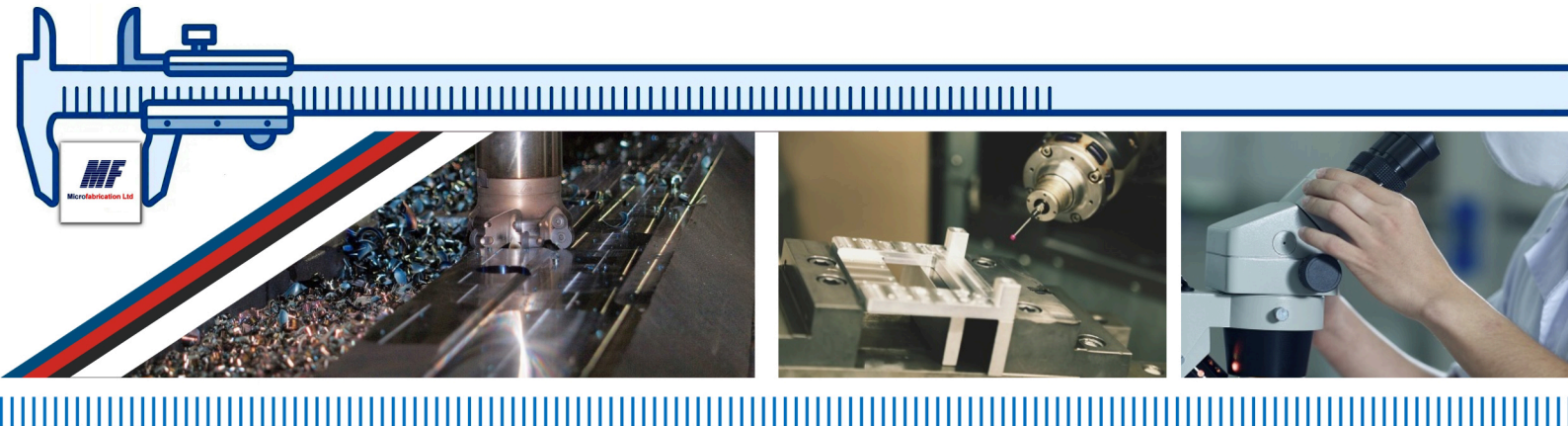
**Timing**  
/ From the day of kick off, all processes will be implemented in accordance with the timing plan and monitored by scheduler.

## Cost Management

- Lean production
- Develop special inspection device and jigs
- Replace manual labor with automation
- One mold with several different cavities(Special situation)
- ...



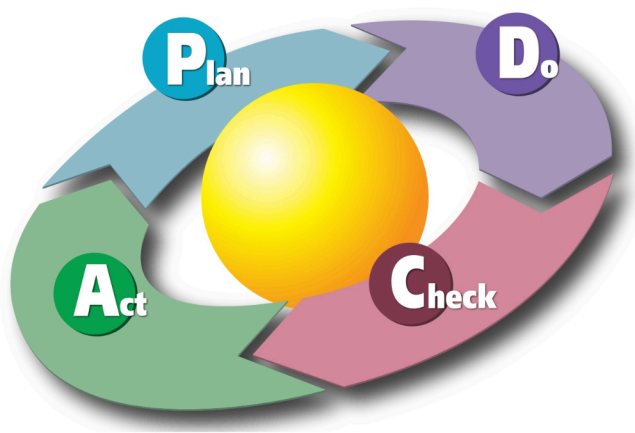




Capabilities  
Services  
Management  
Advantages  
Product Showcase

## Our Advantage

- 1 Quality Assurance
- 2 Cost Reduction
- 3 Flexibility
- 4 After-sales Service



In our company, the engineers who are engaged in the formulation of production process and the design of fixtures/jigs are all engineering graduates majoring in mechanical design, manufacturing&automation. They have both solid theoretical foundation and rich practical experience.



Whether it is a wide range of pipe fittings, fasteners, fittings, or complex assembly products, we can produce and source the rest for you. Please believe that with 1 order, 1 payment, and 1 delivery, you will receive all the items on your purchase list.



It's not contradictory that you are so far away but so close. Because we provide you with pictures, videos and other actual production progress on time, and you can make a video call with us at any time to check the production status of your order in real time.

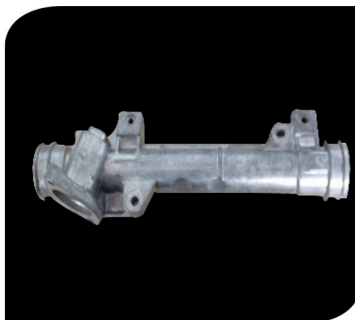
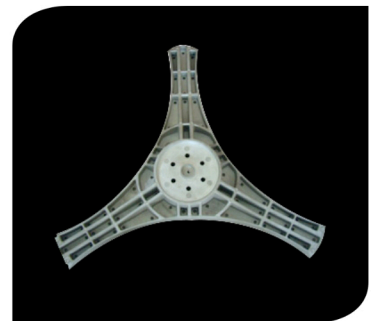
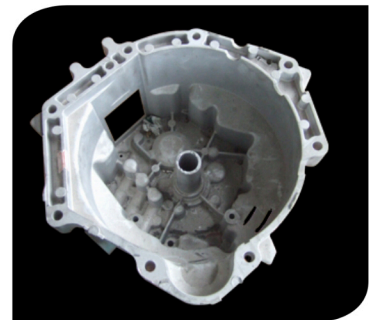
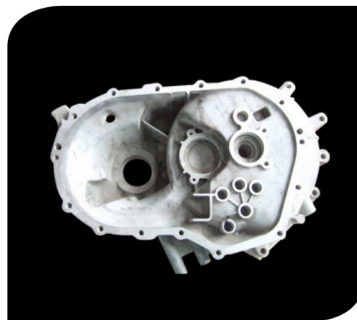


Capabilities  
Services  
Management  
Advantages  
Product Showcase

## Product Showcase



### Aluminum/Mazak High Pressure Die Castings Gallery





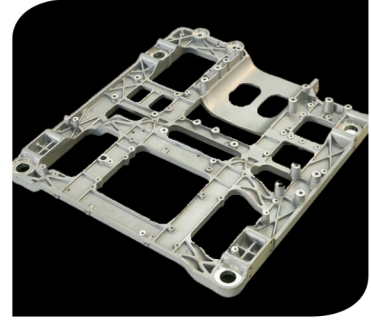
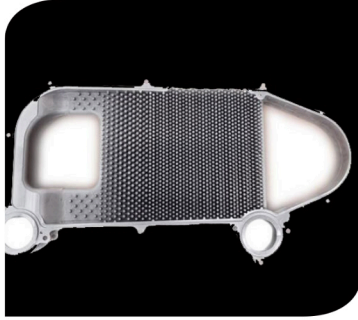
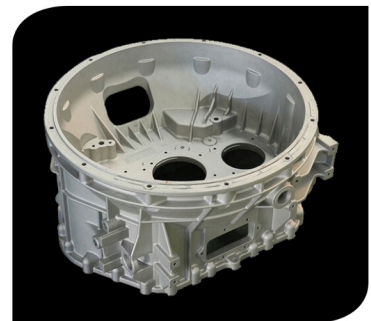


Capabilities  
Services  
Management  
Advantages  
Product Showcase

## Product Showcase



### Aluminum Low Pressure Die Castings Gallery



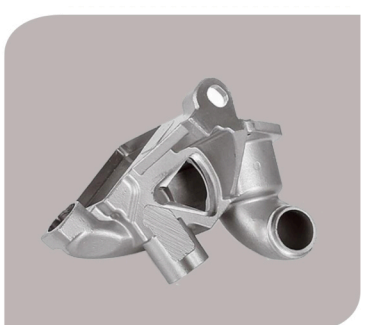
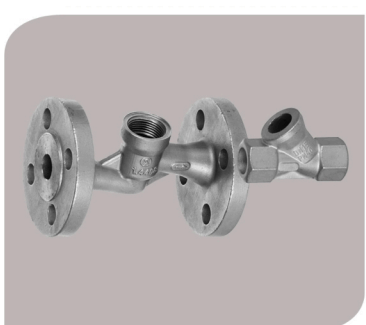
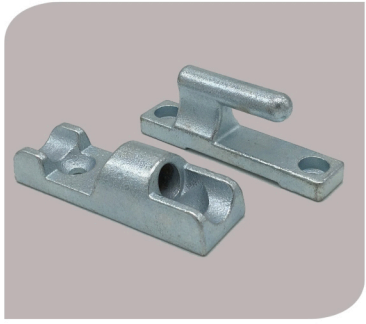




Capabilities  
Services  
Management  
Advantages  
Product Showcase

## Product Showcase

### Lost Wax Castings Gallery





Capabilities  
Services  
Management  
Advantages  
Product Showcase

## Product Showcase

### Hot Forgings Gallery



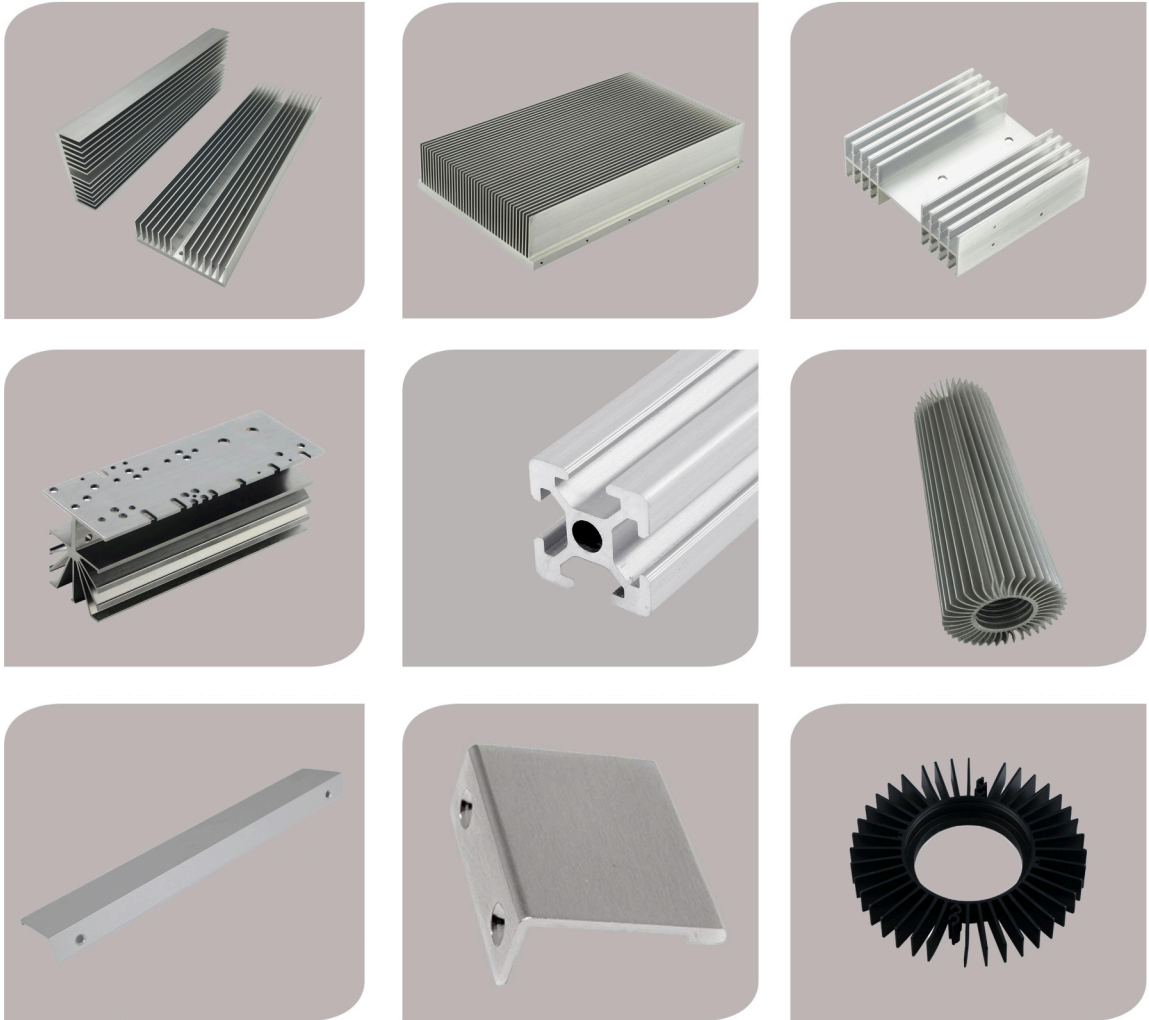




Capabilities  
Services  
Management  
Advantages  
Product Showcase

## Product Showcase

### Extrusions Gallery





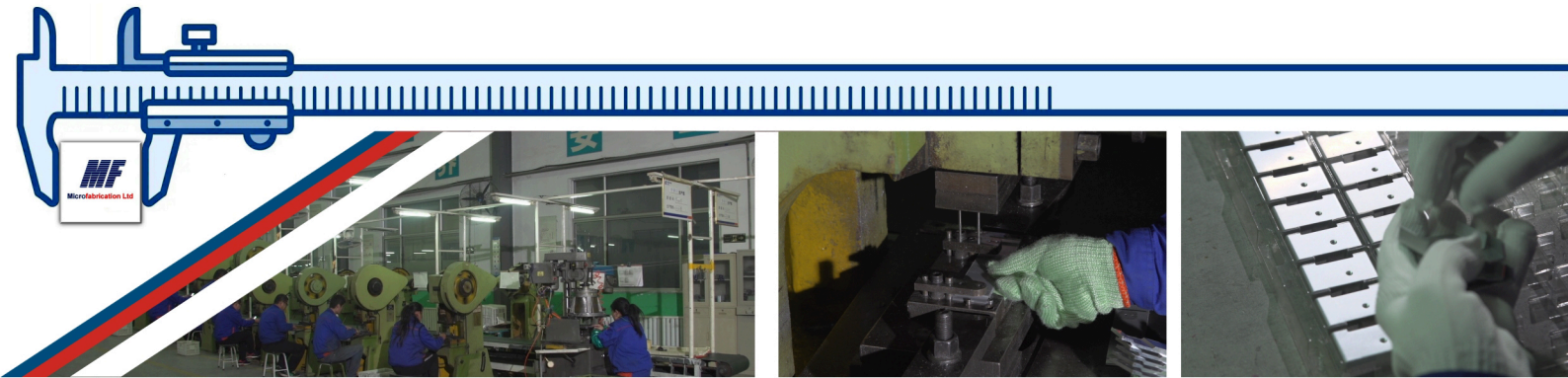


Capabilities  
Services  
Management  
Advantages  
Product Showcase

## Product Showcase

### Machined Parts Gallery

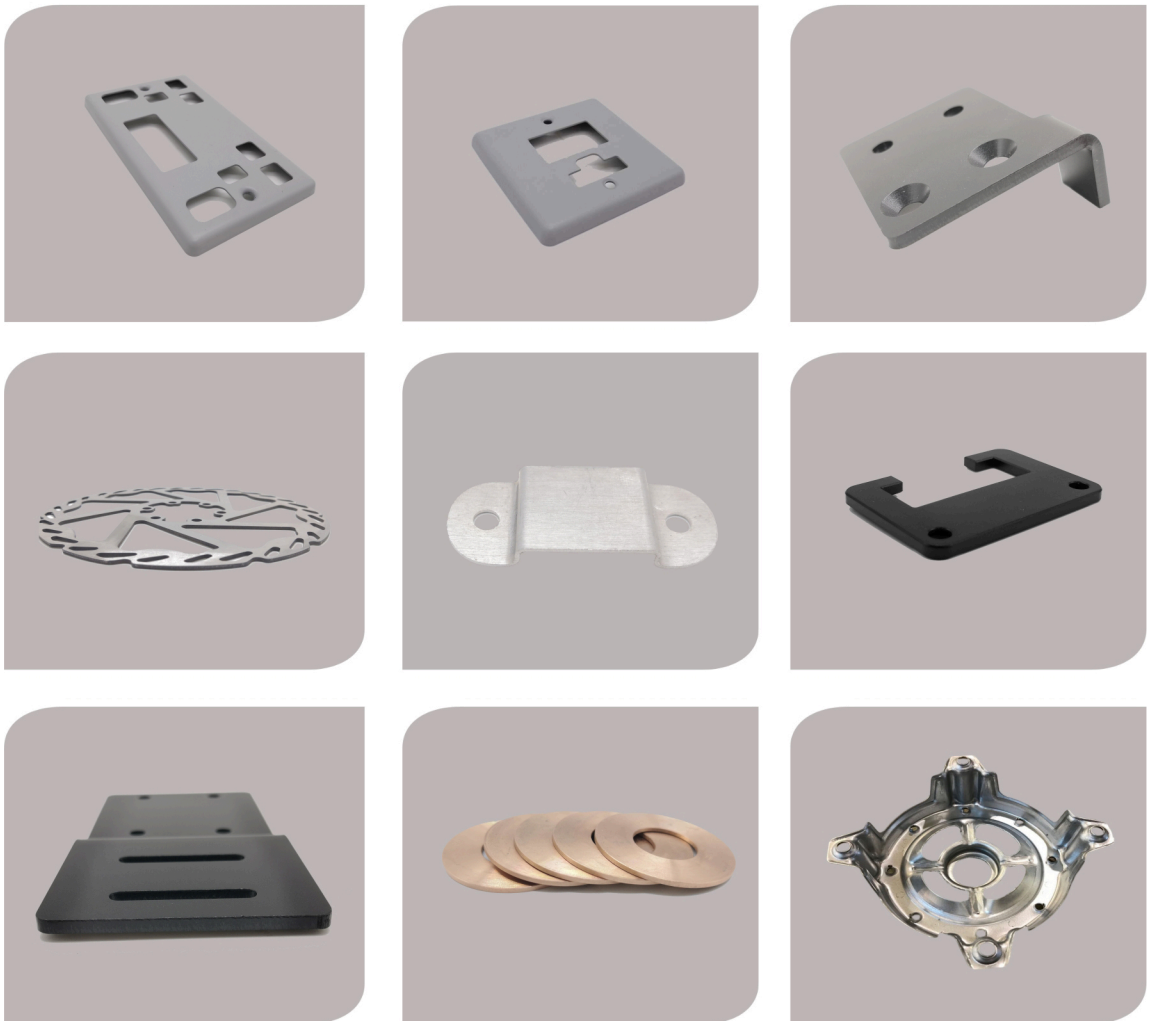




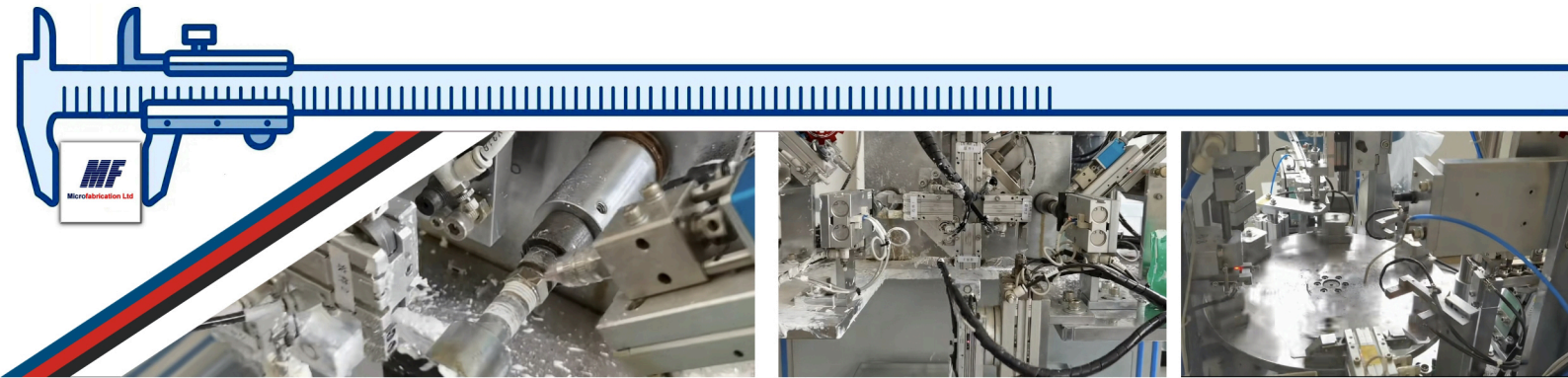
Capabilities  
Services  
Management  
Advantages  
Product Showcase

## Product Showcase

### Metal Stampings Gallery



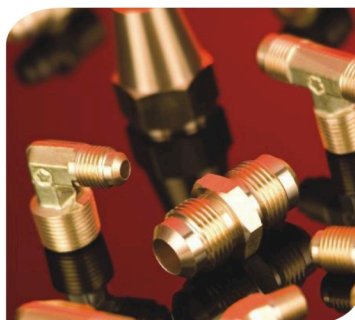
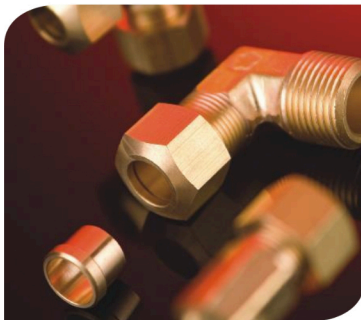




Capabilities  
Services  
Management  
Advantages  
Product Showcase

## Product Showcase

### Pneumatic Fittings Gallery

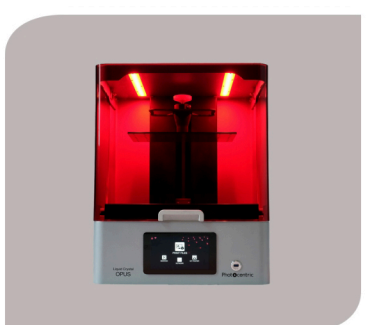
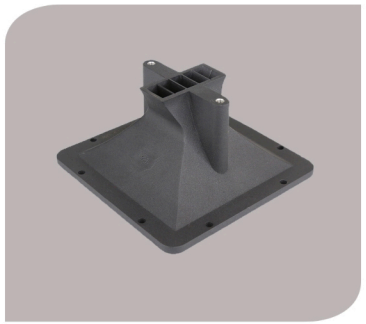




Capabilities  
Services  
Management  
Advantages  
Product Showcase

## Product Showcase

### Assembly Products Gallery







QINGDAO METALWORKING CO., LTD.