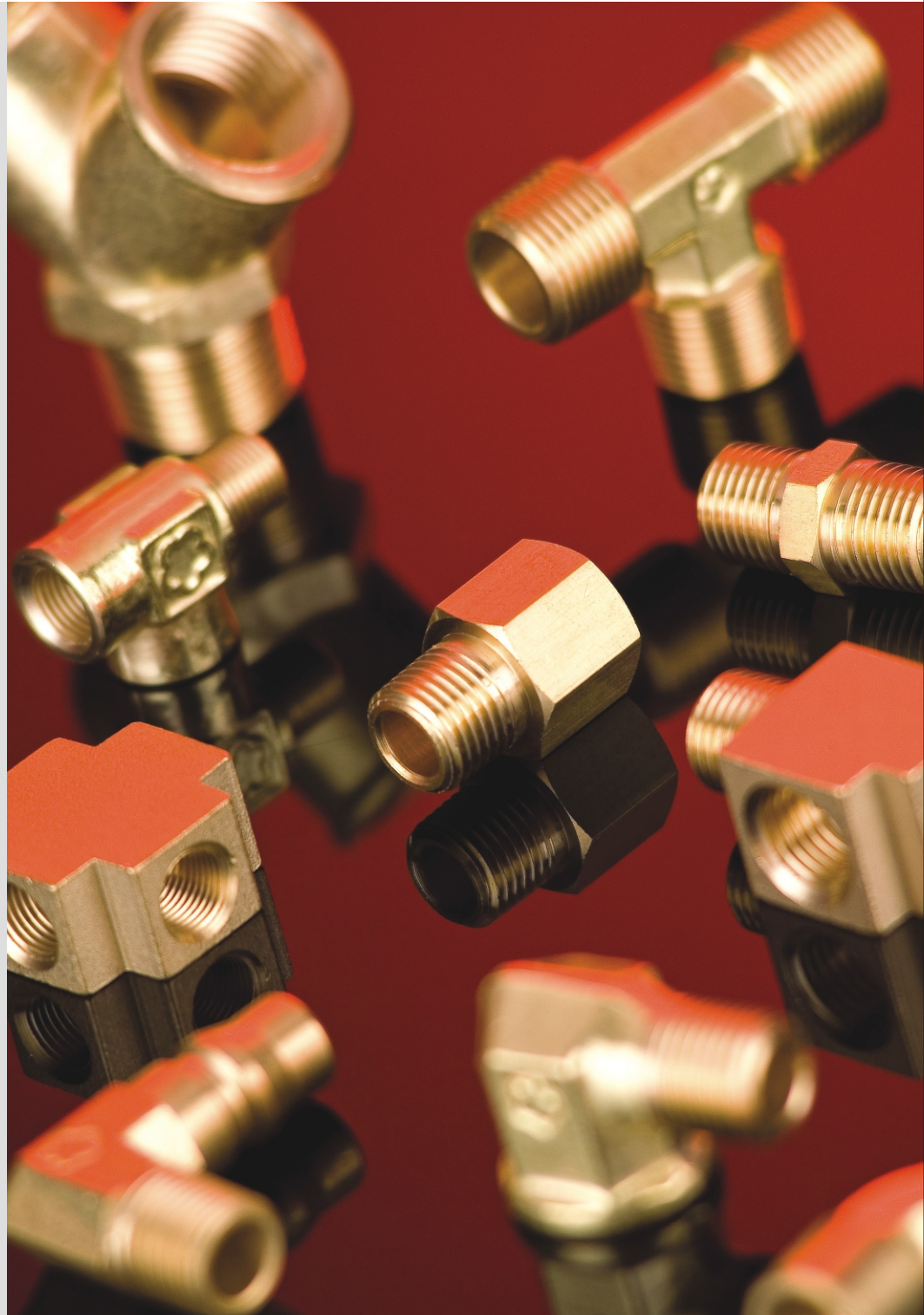
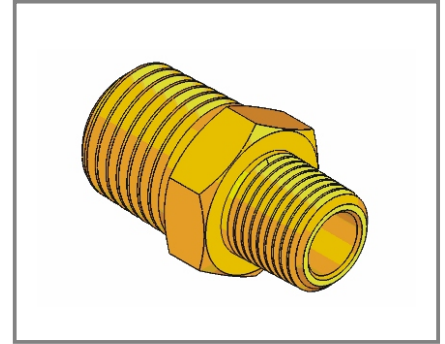
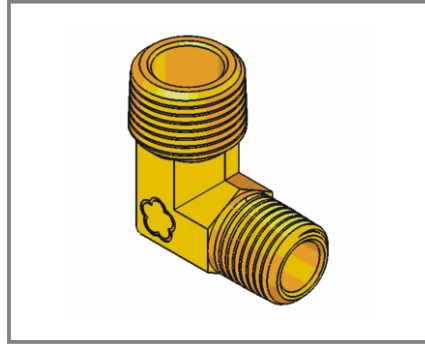
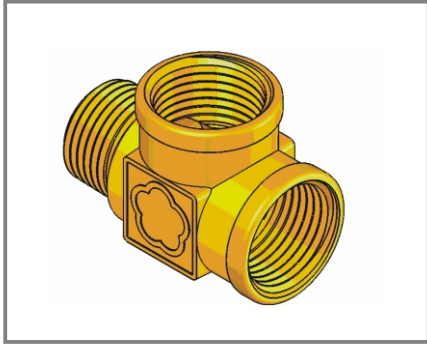


# A/E Pipe Thread Fittings



**A/E series**  
Pipe Thread Fittings  
管牙系列

## A/E Pipe Thread Fittings 管牙系列



### 特點

管牙有BSPT (R) 及NPT兩種。

### 材質

接頭均採用黃銅JIS3604材質加工而成。  
彎頭, 三通均採用黃銅JIS3771材質鍛造並加工而成。

### 工作溫度

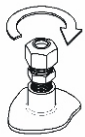
使用於-54°C~121°C。

### 工作壓力

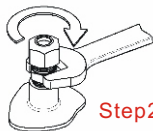
最大70 bar的壓力使用。

### 組裝步驟

- 針對接頭
1. 先用手將外螺紋鎖入內螺紋，並盡量旋緊。
  2. 使用板手額外地轉緊約2圈。



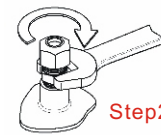
Step1



Step2



Step1



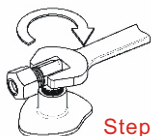
Step2

### 針對彎頭，三通

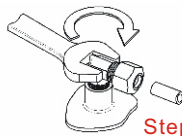
1. 先用手將外螺紋鎖入內螺紋，並盡量旋緊。
2. 使用板手額外地轉緊約1-1/2~2圈。
3. 順時鐘旋轉接頭，轉至管子位置，使能與管子配合。



Step1



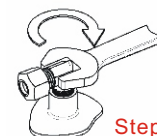
Step2



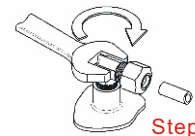
Step3



Step1



Step2



Step3

### Characteristic

Pipe thread includes BSPT(R) and NPT

### Material

Connectors are machined from brass JIS3604  
Elbows, tees are forged and machined from brass JIS3771

### Working Temperature

From -65°F~250°F

### Working Pressure

1000 PSI maximum

### Assembly Instruction

About connectors

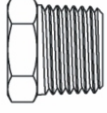
1. Tighten external thread into the internal thread.
2. Tighten an additional 2 revolutions with a wrench

About elbow, tee

1. Finger tighten external thread into the internal thread.
2. Tighten an additional 1 1/2 to 2 revolutions with a wrench.
3. Tighten fitting, Clockwise, to Align with Tubing(never counter clockwise).

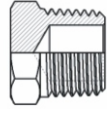
## Adapter

**A08**  
油塞  
Plug



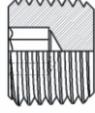
Page A/E 6

**A08**  
油塞  
Plug



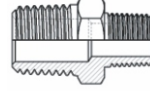
Page A/E 6

**A18**  
油塞  
Plug



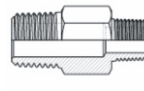
Page A/E 9

**E02**  
雙外牙接頭  
Nipple



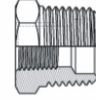
Page A/E 10

**E02**  
加長雙外牙接頭  
Long Nipple



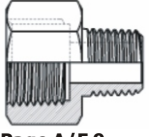
Page A/E 10

**E06**  
卜申  
Bushing



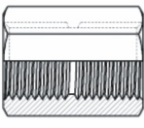
Page A/E 11

**E01**  
內外牙接頭  
Adapter



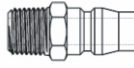
Page A/E 9

**E07**  
雙內牙接頭  
Coupling



Page A/E 11

**A16**  
快速接頭  
Quick  
Coupling



Page A/E 8

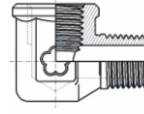
## Elbow

**A02**  
雙外牙彎頭  
Male Elbow



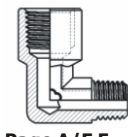
Page A/E 3

**A06**  
內外牙彎頭  
Street Elbow



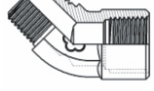
Page A/E 5

**A06**  
內外牙彎頭  
Street Elbow



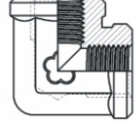
Page A/E 5

**A12**  
45° 內外牙彎頭  
45°  
Street Elbow



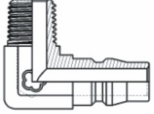
Page A/E 8

**A07**  
雙內牙彎頭  
Union Elbow



Page A/E 5

**A16**  
快速彎頭  
Quick  
Coupling Elbow



Page A/E 8

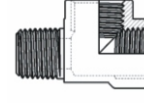
## Tee

**A04**  
外牙三通  
Male Tee



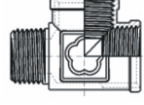
Page A/E 4

**A03**  
內外牙三通  
Street Tee



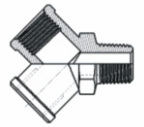
Page A/E 3

**A03 - S**  
內外牙三通  
Street Tee



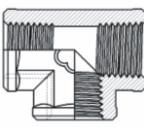
Page A/E 3

**A03 - Y**  
Y 型內外三通  
Y Street Tee



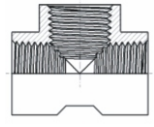
Page A/E 3

**A05**  
內牙三通  
Union Tee



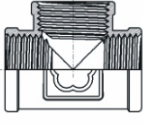
Page A/E 4

**A09**  
切料內牙三通  
Union Tee



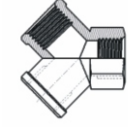
Page A/E 6

**A09 - S**  
內牙三通  
Union Tee



Page A/E 6

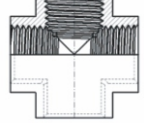
**A05 - Y**  
Y 型內牙三通  
Y Union Tee



Page A/E 4

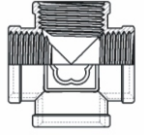
## Cross

**A10**  
內牙四通  
Cross



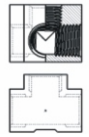
Page A/E 7

**A10 - S**  
內牙四通  
Cross



Page A/E 7

**A16**  
立式內牙四通  
Stand-type  
Cross



Page A/E 8

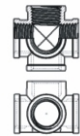
## Five Ways

**A11**  
內牙五通  
Five-Ways



Page A/E 7

**A11 - S**  
內牙五通  
Five-Ways



Page A/E 7

A/E  
Pipe Fittings

A/E  
Hose Barb

H  
45° Flared

S  
Compression

SB  
Bite Type

N  
Fast-In Fittings

NF  
Ferrule Quick

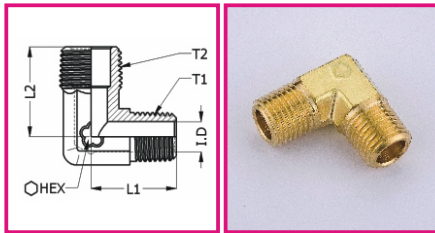
P  
Push-In Fittings

V  
Valves



## A02

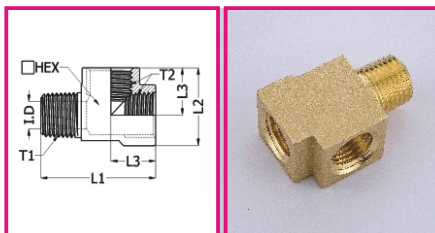
外牙彎頭 Male Elbow



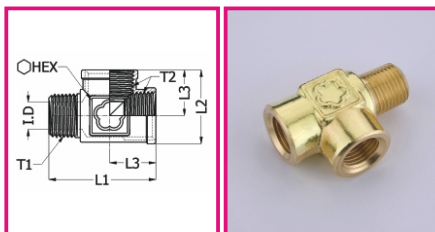
產品編號	管牙 T1	管牙 T2	L1	L2	HEX	I.D
PART NO.	PipeThread T1	PipeThread T2				
A02-L101	1/8	1/8	18	18	9.5	5.5
A02-L102	1/8	1/4	19.5	23	11	5.5
A02-L202	1/4	1/4	24	24	13	8
A02-L203	1/4	3/8	23	24	13	8
A02-L204	1/4	1/2	25.5	29	15	8
A02-L303	3/8	3/8	24	24	13	9
A02-L304	3/8	1/2	29	31	15	10.5
A02-L404	1/2	1/2	31	31	15	11

## A03

內外牙三通 Street Tee



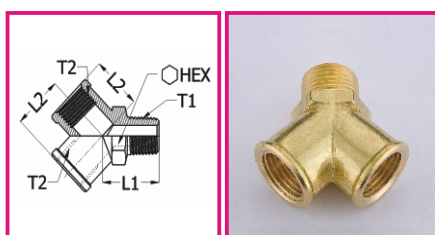
產品編號	管牙 T1	內管牙 T2	L1	L2	L3	HEX	I.D
PART NO.	PipeThread T1	PipeThread T2					
A03-1	1/8	1/8	30.5	20.5	13.3	14	5.5
A03-2	1/4	1/4	36	23	14	18	8
A03-3	3/8	3/8	43.5	30	19.5	21	10.5



產品編號	管牙 T1	內管牙 T2	L1	L2	L3	HEX	I.D
PART NO.	PipeThread T1	PipeThread T2					
A03-S1	1/8	1/8	30.5	20.2	13.5	13.5	5.5
A03-S2	1/4	1/4	36	23.2	14.5	17.5	8
A03-S3	3/8	3/8	41	28	17.5	21	10.5
A03-S4	1/2	1/2	50	34.2	21.5	25.4	13

## A03-Y

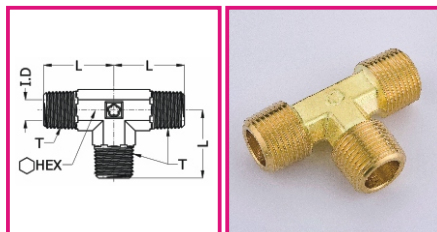
內外牙 Y 型三通 Y type Street Tee



產品編號	管牙 T1	內管牙 T2	L1	L2	HEX
PART NO.	PipeThread T1	PipeThread T2			
A03-Y1	1/8	1/8	16.1	13.9	13
A03-Y2	1/4	1/4	20	17.2	17
A03-Y3	3/8	3/8	22	18.3	20
A03-Y4	1/2	1/2	25.7	25.6	25

## A04

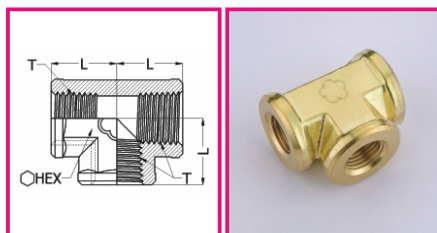
外牙三通 Male Tee



產品編號	管牙 T	L	HEX	I.D
PART NO.	PipeThread T			
A04-T1	1/8	18	9.5	5.5
A04-T2	1/4	21.5	11	7
A04-T3	3/8	25	12	8
A04-T4	1/2	30	15	11

## A05

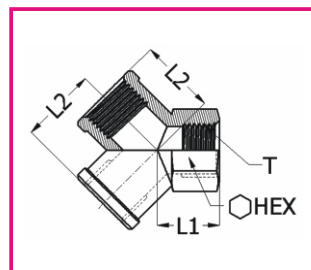
內牙三通 Union Tee



產品編號	內管牙 T	L	HEX	I.D
PART NO.	PipeThread T			
A05-T1	1/8	13.5	14.5	8.2
A05-T2	1/4	17	17	11.2
A05-T3	3/8	18.5	20	14.8
A05-T4	1/2	24.5	25	18.5

## A05-Y

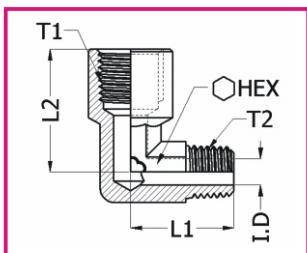
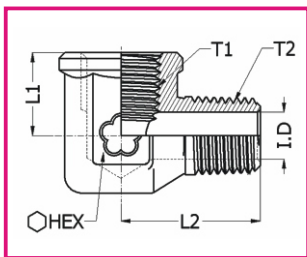
內牙 Y 型三通 Y type Union Tee



產品編號	內管牙 T	L1	L2	HEX
PART NO.	PipeThread T			
A05-Y1	1/8	11.3	13.9	13
A05-Y2	1/4	14	17.2	17
A05-Y3	3/8	17	18.3	20
A05-Y4	1/2	17.7	25.6	25

## A06

### 內外牙彎頭 Street Elbow

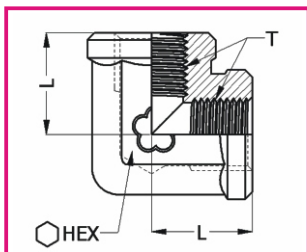


產品編號	內管牙 T1	管牙 T2	L1	L2	HEX	I.D
PART NO.	PipeThread T1	PipeThread T2				
A06-L101	1/8	1/8	15.5	19.5	14	5.5
A06-L102	1/8	1/4	13.5	23.5	17.5	8
A06-L201	1/4	1/8	14.5	21	17.5	5.5
A06-L202	1/4	1/4	14.5	24	17	8
A06-S203	1/4	3/8	15.5	27.5	21	10.5
A06-S301	3/8	1/8	15.5	24	21	5.5
A06-S302	3/8	1/4	15.5	27	21	8
A06-S303	3/8	3/8	15.5	27.5	21	10.5
A06-S304	3/8	1/2	18.5	33	24	13
A06-S403	1/2	3/8	18.5	28.5	24	10.5
A06-S404	1/2	1/2	18.5	33	24	13

產品編號	內管牙 T1	管牙 T2	L1	L2	HEX	I.D
PART NO.	PipeThread T1	PipeThread T2				
A06-L1	1/8	1/8	22.5	20	11	5.5
A06-L2	1/4	1/4	27	24	13	8
A06-2-3	1/4	3/8	28	26	13	9

## A07

### 內牙彎頭 Union Elbow

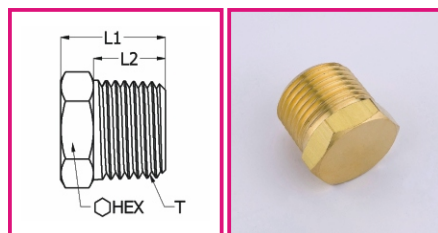


產品編號	內管牙 T	L	HEX	I.D
PART NO.	PipeThread T			
A07-L101	1/8	14	14.5	8.2
A07-L202	1/4	17	17	11.2
A07-L303	3/8	18	20.5	14.8
A07-L404	1/2	23.5	24	18.5

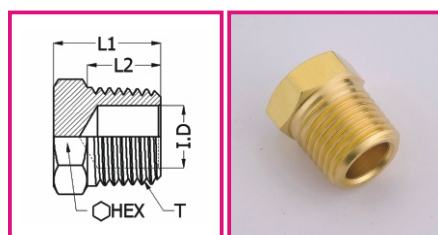
A/E  
Pipe FittingsA/E  
Hose BarbH  
45° FlaredS  
CompressionS B  
Bite TypeN  
Fast-In FittingsN F  
Ferrule QuickP  
Push-In FittingsV  
Valves

## A08

油塞 Plug



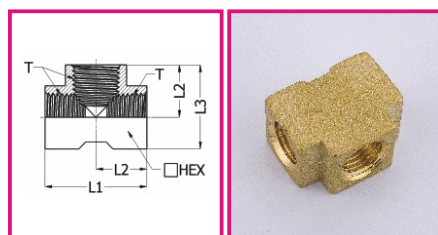
產品編號	管牙 T	L1	L2	HEX
PART NO.	PipeThread T			
A08-1-1	1/8	14	9	10
A08-2-1	1/4	17	12	14
A08-3-1	3/8	17	12	17
A08-4-1	1/2	21	15	21
A08-6-1	3/4	22	15	27
A08-8-1	1"	25.5	17.5	34



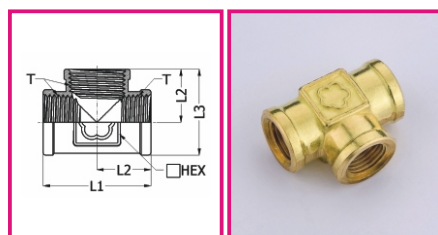
產品編號	管牙 T	L1	L2	HEX	I.D
PART NO.	PipeThread T				
A08-1	1/8	14	9	10	5.5
A08-2	1/4	17	12	14	8
A08-3	3/8	17	12	17	10.5
A08-4	1/2	21	15	21	13
A08-6	3/4	22	15	27	19.5
A08-8	1"	25.5	17.5	34	26

## A09

內牙三通 Union Tee



產品編號	內管牙 T	L1	L2	L3	HEX	I.D
PART NO.	PipeThread T					
A09-T1	1/8	26	13	20	14	8.2
A09-T2	1/4	30	15	24	18	11.2
A09-T3	3/8	40	20	29.5	21	14.8



產品編號	內管牙 T	L1	L2	L3	HEX	I.D
PART NO.	PipeThread T					
A09-S1	1/8	27	13.5	20	13	8.2
A09-S2	1/4	29.5	14.8	23	17	11.2
A09-S3	3/8	35	17.5	28	21	14.8
A09-S4	1/2	43	21.5	34	25.4	18.5

A/E  
Pipe Fittings

A/E  
Hose Barb

H  
45° Flared

S  
Compression

SB  
Bite Type

N  
Fast-In Fittings

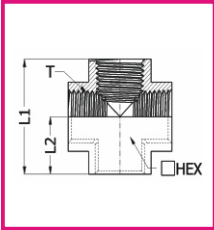
NF  
Ferrule Quick

P  
Push-In Fittings

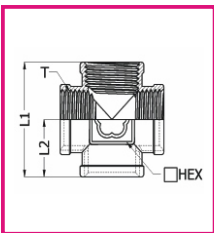
V  
Valves

## A10

內牙四通 Cross



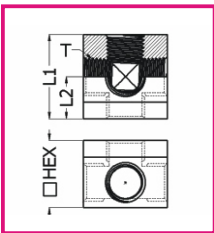
產品編號	內管牙 T	L1	L2	HEX	I.D
PART NO.	PipeThread T				
A10-1	1/8	26.5	13.3	14	8.2
A10-2	1/4	30	15	18	11.2
A10-3	3/8	40	20	21	14.8



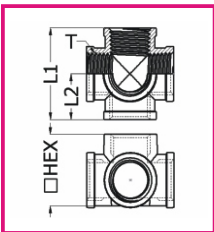
產品編號	內管牙 T	L1	L2	HEX	I.D
PART NO.	PipeThread T				
A10-S1	1/8	26	13	13	8.2
A10-S2	1/4	30	15	17	11.2
A10-S3	3/8	36	18	21	14.8
A10-S4	1/2	43	21.5	25.4	18.5

## A11

內牙五通 Union Five-ways



產品編號	內管牙 T	L1	L2	HEX	I.D
PART NO.	PipeThread T				
A11-2	1/4	30	15	24	11.2



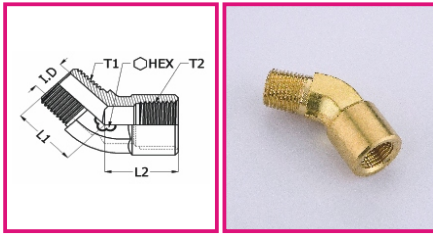
產品編號	內管牙 T	L1	L2	HEX	I.D
PART NO.	PipeThread T				
A11-S2	1/4	30	15	23.5	11.2

A/E Pipe Fittings  
 A/E Hose Barb  
 H 45° Flared  
 S Compression  
 SB Bite Type  
 N Fast-In Fittings  
 NF Ferrule Quick  
 P Push-In Fittings  
 V Valves



## A12

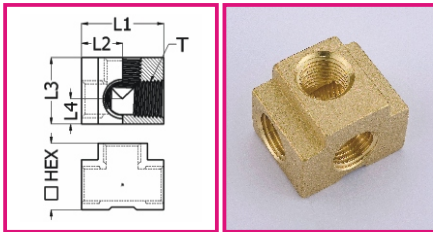
45°內外彎頭 45° Street Elbow



產品編號	管牙 T1	內管牙 T2	L1	L2	HEX	I.D
PART NO.	PipeThread T1	PipeThread T2				
A12-1	1/8	1/8	16	18.5	11	5.5
A12-2	1/4	1/4	21.5	20	18.5	8

## A16

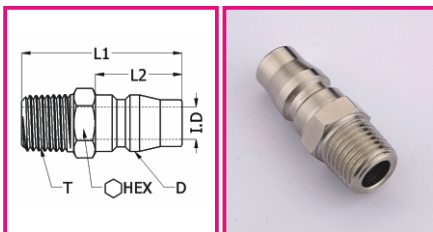
立型四通 Stand-type Cross



產品編號	內管牙 T	L1	L2	L3	L4	HEX
PART NO.	PipeThread T					
A16-2	1/4	30	15	24	9	24

## A16

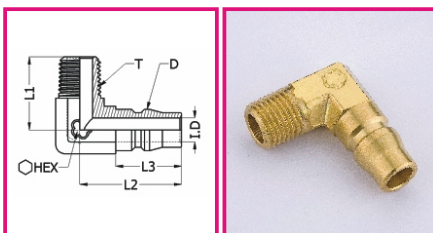
快速接頭 Quick Coupling Connector



產品編號	管牙 T	L1	L2	D	HEX	I.D
PART NO.	PipeThread T					
A16-C2	1/4	37	20	13.1	14	7.5

## A16

快速彎頭 Quick Coupling Elbow



產品編號	管牙 T	L1	L2	L3	D	HEX	I.D
PART NO.	PipeThread T						
A16-L2	1/4	23	30.5	20	13.1	13	7.5

A/E  
Pipe Fittings

A/E  
Hose Barb

H  
45° Flared

S  
Compression

SB  
Bite Type

N  
Fast-In Fittings

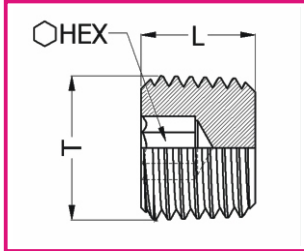
NF  
Ferrule Quick

P  
Push-In Fittings

V  
Valves

## A18

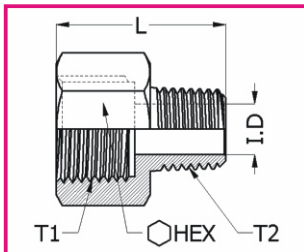
內六角油塞 **Hollow Hex head Plug**



產品編號	管牙 T	L	HEX
PART NO.	PipeThread T		
A18-1	1/8	8	5
A18-2	1/4	11.5	6
A18-3	3/8	11.5	8
A18-4	1/2	15.5	10

## E01

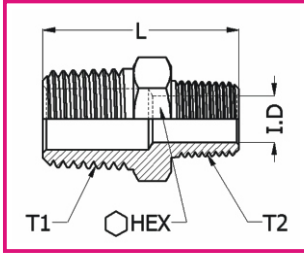
內外牙接頭 **Adapter**



產品編號	內管牙 T1	管牙 T2	L	HEX	I.D.
PART NO.	PipeThread T1	PipeThread T2			
E01-C101	1/8	1/8	21	12	5.5
E01-C102	1/8	1/4	24	14	8.5
E01-C103	1/8	3/8	22	17	8.5
E01-C201	1/4	1/8	24	17	5.5
E01-C202	1/4	1/4	27	17	8
E01-C203	1/4	3/8	27	17	11.5
E01-C204	1/4	1/2	29.5	21	11.5
E01-C301	3/8	1/8	24	21	5.5
E01-C302	3/8	1/4	27	21	8
E01-C303	3/8	3/8	27	21	10.5
E01-C304	3/8	1/2	29.5	21	15
E01-C402	1/2	1/4	30	24	8
E01-C403	1/2	3/8	30	24	10.5
E01-C404	1/2	1/2	32.5	24	14

## E02

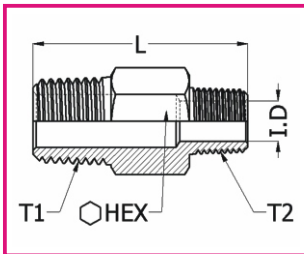
雙外牙接頭 Nipple



產品編號	管牙 T1	管牙 T2	L	HEX	I.D
PART NO.	PipeThread T1	PipeThread T2			
E02-C101	1/8	1/8	23	10	6
E02-C201	1/4	1/8	26	14	5.5
E02-C202	1/4	1/4	29	14	8
E02-C301	3/8	1/8	26	17	5.5
E02-C302	3/8	1/4	29	17	8
E02-C303	3/8	3/8	29	17	10.5
E02-C401	1/2	1/8	29.5	21	5.5
E02-C402	1/2	1/4	32.5	21	8
E02-C403	1/2	3/8	32.5	21	10.5
E02-C404	1/2	1/2	35	21	14
E02-C602	3/4	1/4	34	27	8
E02-C603	3/4	3/8	34	27	10.5
E02-C604	3/4	1/2	36.5	27	14
E02-C606	3/4	3/4	37	27	19
E02-C804	1"	1/2	40	34	14
E02-C806	1"	3/4	40.5	34	19
E02-C808	1"	1"	43	34	24
E02-C8282	1-1/4"	1-1/4"	46	42	32

## E02

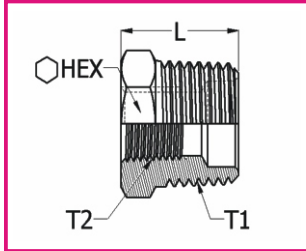
加長型雙外牙接頭 Long Nipple



產品編號	管牙 T1	管牙 T2	L	HEX	I.D
PART NO.	PipeThread T1	PipeThread T2			
E02-2-2-40	1/4	1/4	40	14	8
E02-2-2-43	1/4	1/4	43	14	8

## E06

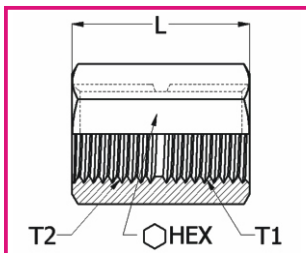
### 卜申 Bushing



產品編號	管牙 T1	內管牙 T2	L	HEX
PART NO.	PipeThread T1	PipeThread T2		
E06-C201	1/4	1/8	17	14
E06-C301	3/8	1/8	17	17
E06-C302	3/8	1/4	17	17
E06-C401	1/2	1/8	21	21
E06-C402	1/2	1/4	21	21
E06-C403	1/2	3/8	21	21
E06-C602	3/4	1/4	22	27
E06-C603	3/4	3/8	22	27
E06-C604	3/4	1/2	22	27
E06-C802	1"	1/4	26	34
E06-C803	1"	3/8	26	34
E06-C804	1"	1/2	26	34
E06-C806	1"	3/4	26	34

## E07

### 雙內牙接頭 Coupling



產品編號	內管牙 T1	內管牙 T2	L	HEX
PART NO.	PipeThread T1	PipeThread T2		
E07-C101	1/8	1/8	20	12
E07-C201	1/4	1/8	23	17
E07-C202	1/4	1/4	25	17
E07-C301	3/8	1/8	23	21
E07-C302	3/8	1/4	25	21
E07-C303	3/8	3/8	25	21
E07-C401	1/2	1/8	26	24
E07-C402	1/2	1/4	28	24
E07-C403	1/2	3/8	28	24
E07-C404	1/2	1/2	31	24
E07-C603	3/4	3/8	31	30
E07-C604	3/4	1/2	32	30
E07-C606	3/4	3/4	33	30